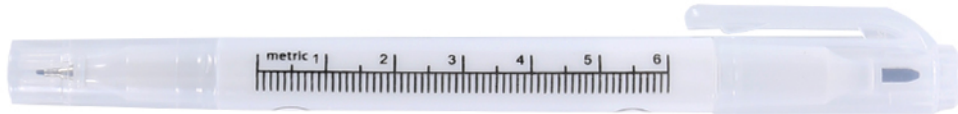


# Surgical Skin Marker



Single tip



Dual tips

## Intended Use:

CITEC™ Surgical Skin Marker is designed to mark surgical incision/anatomical sites on patient's skin prior to surgical procedures.

## Features:

- + Various tip sizes available for different surgical applications needs:
  - Fine tip(0.5mm) used for small note or dot.
  - Standard tip (1.0mm) used for long distance writing and large scale marking.
- + Gentian violet-colored solution, with great scrub-resistant property, non-toxic, and highly visible.
- + Marking can be removed by alcohol within 1-2minutes after marking.
- + Equipped with flexible ruler in each pack, permits accurate measurement, even over contoured surfaces.
- + Individually packed in peel pouch under sterile condition.

Code No.	Type	Tip Size(mm)	Ink Color	Diameter(mm)	Length(mm)	Units/ Box
CIT-SSM-10S	Single tip	1.0	Violet	9.5	167	1000
CIT-SSM-0510D	Dual tips	0.5 & 1.0	Violet	11	140	1000