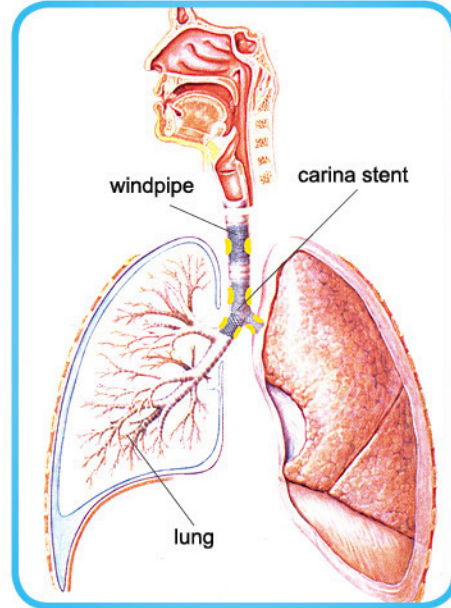


Tracheal Stent

Application: Tracheal stent is used for tracheal stenosis caused by various malignant lesions.



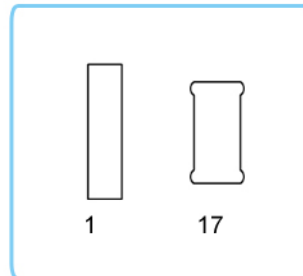
Vertical



Performance Characteristics:



- Self expanding with high radial force
- Excellent positional stability
- Resistant and elastic covering
- Fully covered stents available
- Release with high radiopacity
- Golden radiopaque markers for clearer visibility

Stent Shape Y



- 1. Vertical cylinder structure
- 17. Tracheal two ball ends

Specifications:

Product Code	Dia.A (mm)	Total Length B (mm)	Stent Shape Y	Product Illustration	Introducer
NTJA2-ABY	10/12/14/16/18/20/22	20/30/40/50/60/70/80	1/17		18Fr*600mm
NTJA2-ABY- FC					OTW

Remark: FC means full covered.