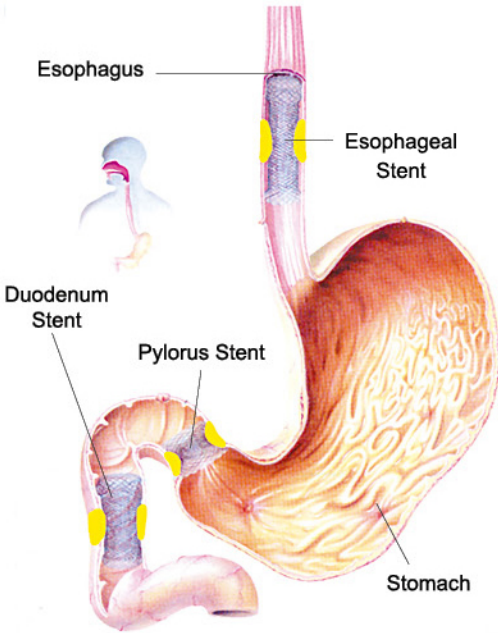


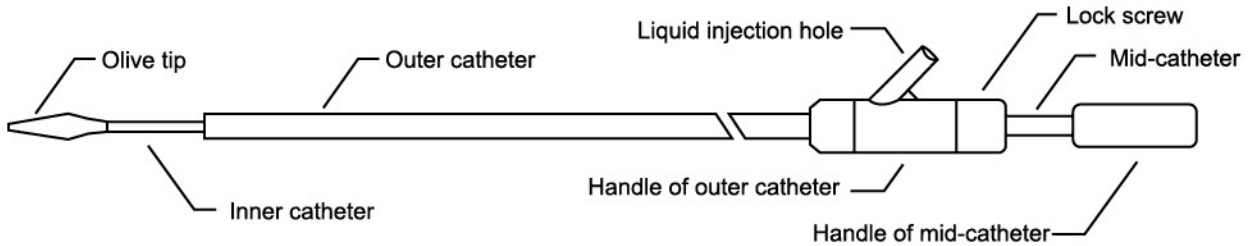
Esophageal Stent

Application: Esophageal stent is used for esophageal, cardiac and anastomotic stenosis caused by malignant lesions, and covered esophageal stent is generally used for malignant and/ or benign stenosis of lumen.






Performance Characteristics:

- Atraumatic ends to resist migration
- Elastic covering to resist tumor inner growth
- Golden radiopaque markers for clearer visibility
- Variety of lengths and diameters
- Distal and proximal deployment
- Delivery system with markers for better position accuracy

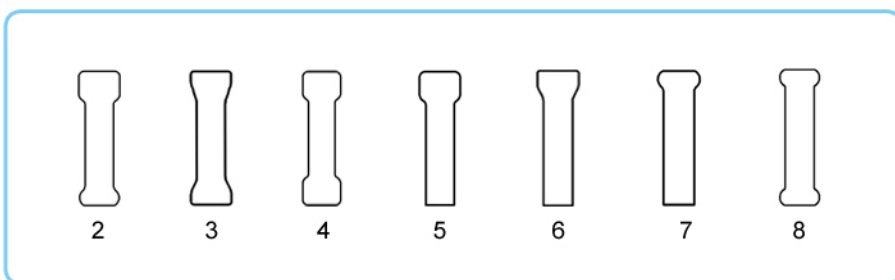


Specifications:

Product Code	Dia. A (mm)	Total Length B (mm)	Stent Shape Y	Covering	Introducer
NTJB-ABY					
NTJB-ABY- HC	18/20/22/24	60/80/100/120/ 140/150/160	2/3/4/5/6/7/8		24Fr*700mm OTW 18Fr*700mm OTW 18Fr*650mm Proximal Release
NTJB-ABY- FC					

Remark: HC means half covered; FC means full covered.

Stent Shape Y



2. Proximal cup end, distal ball end
3. Two tulip ends
4. Two cup ends
5. Single cup end
6. Single tulip end
7. Single ball end
8. Two ball ends